

Powerful, Light and Versatile Performance C-Arm

# OSCAR SERIES



# OSCAR

SERIES from Genoray

Driven by a passion for X-ray technology, Genoray is committed to leading a healthy lifestyle by constantly improving our products.

Global healthcare,  
Endless innovation,  
A better world.

Genoray is committed to contributing to the health and happiness of human life.



## OSCAR 15 | 15FD

Exceptional, All-round FPD C-Arm

- 15kW HFG
- Flat-panel detector (26x26cm, CMOS)  
Flat-Panel Detector (30x30cm, a-Si)
- Wide FOV, low noise
- 150° wide orbital rotation
- DSA (Angiography, Road map, Post processing)



## OSCAR 15i | 15iL

More, Advanced I.I. C-Arm

- 15kW HFG
- 9" Image Intensifier  
12" Image Intensifier
- Wide FOV, low noise
- 135° wide orbital rotation
- DSA (Angiography, Road map, Post processing)



## OSCAR prime

Versatile, Convenient FPD C-Arm

- 5.3kW HFG / 4.5 kW HFG
- Flat-Panel Detector (26x26cm, CMOS), (23x23cm, a-Si)
- Active air cooling system
- Wide FOV, low noise
- 180° wide orbital rotation
- DSA (Angiography, Road map, Post processing)



## OSCAR classic

Classical, Well-balanced I.I. C-Arm

- 5.3kW HFG / 4.5kW HFG
- 9" Image Intensifier
- Active air cooling system
- Wide FOV, low noise
- 150° wide orbital rotation
- DSA (Angiography, Road map, Post processing)



# OSCAR 15 | 15FD

OSCAR 15 FD offers various operations with exceptional images through Flat-panel detector and 15kW HFG. It is a culmination of several year worth of developmental experience from GENORAY.



Flat-Panel	HFG	DSA
<ul style="list-style-type: none"><li>· 26x26cm CMOS *OSCAR 15</li><li>· 30x30cm a-Si *OSCAR 15FD</li></ul>	<ul style="list-style-type: none"><li>· 15kW HFG</li></ul>	<ul style="list-style-type: none"><li>· Angiography</li><li>· Road Map</li><li>· Post Processing</li></ul>



Exceptional,  
All-round FPD C-Arm

26x26cm CMOS  
30x30cm a-Si

15kW HFG

150° Dynamic  
Orbital Rotation

10.4"  
Touch Screen

Laser Pointer

Low Dose

Free Space 800mm  
SID 1,000mm

DSA

Dual Foot Switch  
(Shot/Save)

DICOM 3.0  
CD/DVD Burner  
USB Port

Wide Monitor

Waterproof  
Keyboard & Mouse

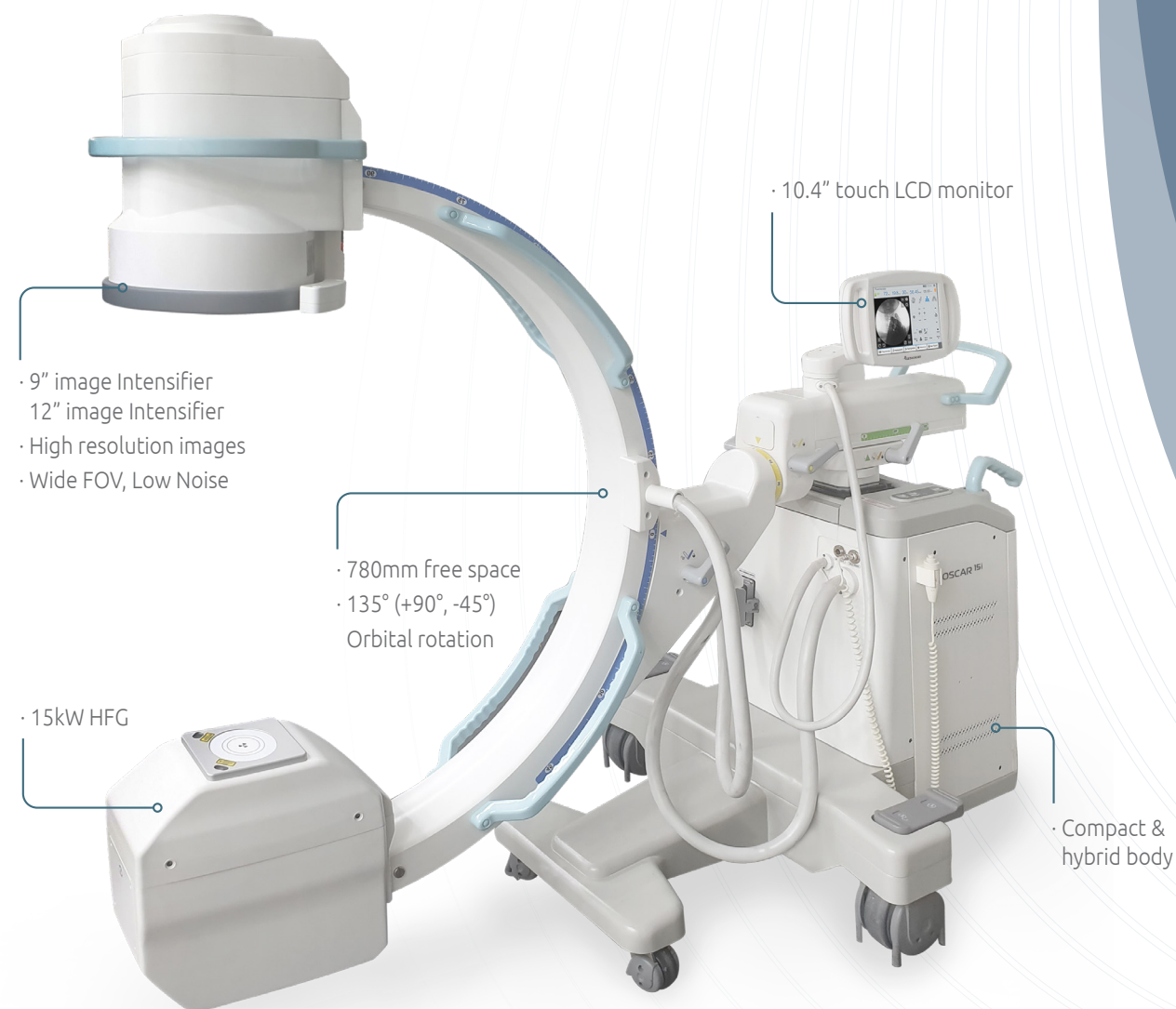
Wide LCD Monitor

Monitor cart



# OSCAR 15i | 15iL

OSCAR 15i provides superior images, better than conventional equipments'.  
If you choose the option - 12 inches' I.I, you will get larger images.  
OSCAR 15i is more developed Mobile C-Arm with GENORAY's technology.



9"/12" Image Intensifier	HFG	DSA
· High-resolution Images	· 15kW HFG	· Angiography · Road Map · Post Processing

\* 12" Image Intensifier (OSCAR 15i L)



More,  
Advanced I.I. C-Arm

9" Image Intensifier  
12" Image Intensifier

15kW HFG

135° Dynamic  
Orbital Rotation

10.4"  
Touch Screen

Laser Pointer

Low Dose

Free space 780mm  
SID 1,000mm

DSA

Dual Foot Switch  
(Shot/Save)

DICOM 3.0  
CD/DVD Burner  
USB Port

Wide Monitor

Waterproof  
Keyboard & mouse

Wide LCD Monitor

Monitor Cart



# OSCAR prime

The OSCAR Prime is a unique system which possesses a 180 degree orbital rotation for maximizing the operational environment. Using the same self-developed CMOS detector, it produces high quality images.



## Flat-Panel

- 26x26cm CMOS
- 23x23cm a-Si

## Wide Orbital Rotation

- 180° (+90°, -90°)

## DSA

- Angiography
- Road Map
- Post Processing

Versatile,  
Convenient FPD C-Arm

26x26cm CMOS  
23x23cm a-Si

5.3kW HFG  
4.5kW HFG

180° Dynamic  
Orbital Rotation

10.4"  
Touch Screen

Active Air Cooling

Low Dose

Free Space 800mm  
SID 1,000mm

DSA

Dual Foot Switch  
(Shot/Save)

DICOM 3.0  
CD/DVD Burner  
USB Port

Wide Monitor

Waterproof  
Keyboard & Mouse

Wide LCD Monitor

Monitor cart



# OSCAR classic

The Oscar Classic is a highly popular system all over the world with a stable output to produce high quality images. The convenient touch screen and compact design leads to a more convenient way to acquire images.



## 9" Image Intensifier

- High-resolution Images

## Wide Orbital Rotation

- 150° (+90°, -60°) Orbital Rotation

## Active Air Cooling System

- To prevent overheating
- To offer longer duration of operation

Classical,  
Well-balanced I.I. C-Arm

9" Image Intensifier

5.3kW HFG  
4.5kW HFG

150° Dynamic  
Orbital Rotation

10.4"  
Touch Screen

DSA

Active Air Cooling

Wide LCD Monitor

Monitor Cart

Free Space 800mm  
SID 1,000mm

Low Dose

Dual Foot Switch  
(Shot/Save)

DICOM 3.0  
CD/DVD Burner  
USB Port

Wide Monitor

Waterproof  
Keyboard & Mouse

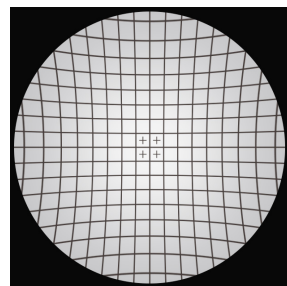


## Flat Panel Detector

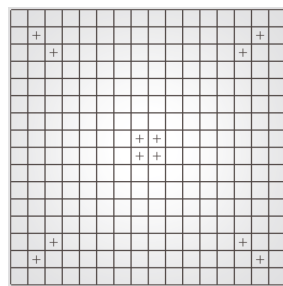
The Flat Panel detector, developed with accumulated experience and technology, enables to achieve high-definition video images without afterimages and provides exceptional images with low noise through minimal x-ray exposure.

### Exceptional Image Quality

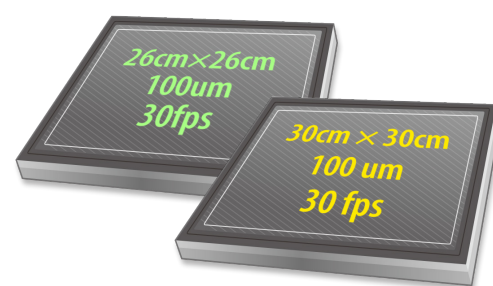
With the optimal flat panel detector size of 26x26cm you will acquire clear image with high quality resolution. It allows accurate diagnosis in all procedures.



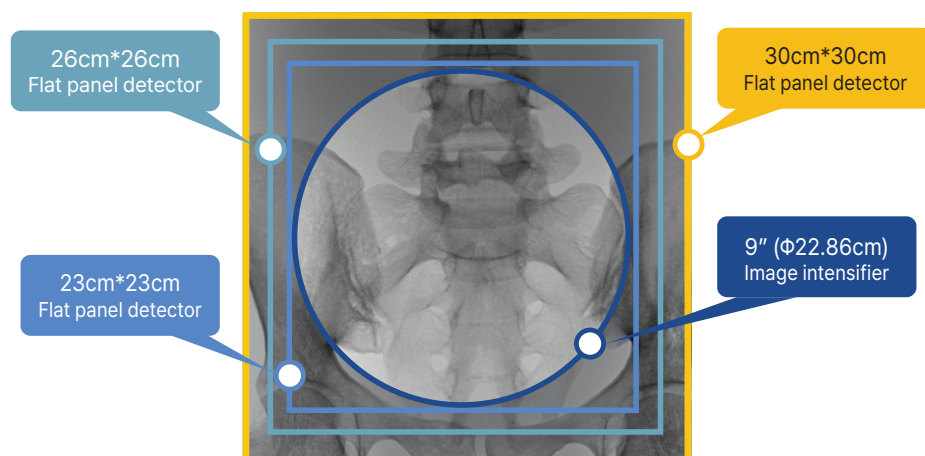
<Image Intensifier>



<FPD>



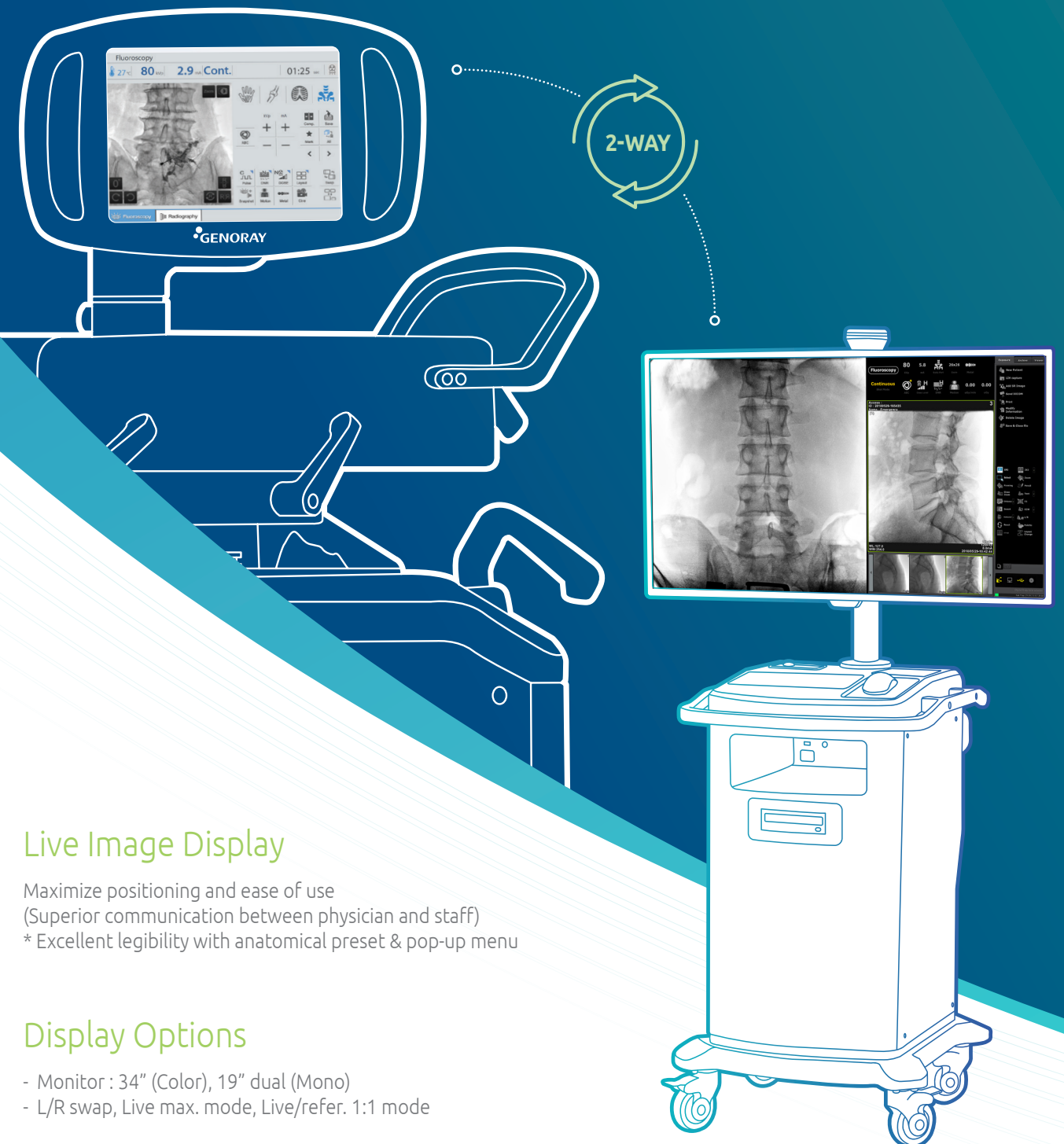
\* In house manufacturing



\* Covers wider area compared to conventional 9" Image Intensifier

## Live Image & Communication

User-friendly 10.4" touch screen operation panel enables two-way communication between doctor and operator by using live image.



### Live Image Display

Maximize positioning and ease of use  
(Superior communication between physician and staff)  
\* Excellent legibility with anatomical preset & pop-up menu

### Display Options

- Monitor : 34" (Color), 19" dual (Mono)
- L/R swap, Live max. mode, Live/refer. 1:1 mode

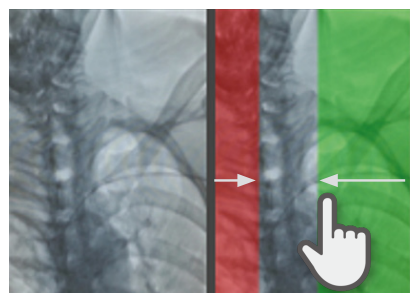
# OSCAR series

## Features

### X-ray Dose Management

#### Virtual Collimation

A virtual collimator allows for the selection of a desired field of view, while reducing the amount of radiation exposure.



#### Dose Structured Report

The Dose SR allows for an efficient radiological workflow, improves patient care and enhances working conditions.

#### Auto Collimation

Prevention of unnecessary X-ray exposure by focusing on the area of interest while automatically collimating the surrounding areas.



### Image Processing

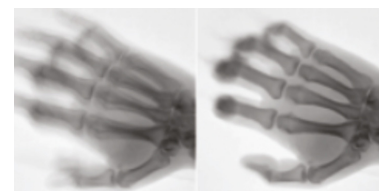
#### Edge Enhancement

The edges are enhanced for a more accurate diagnosis



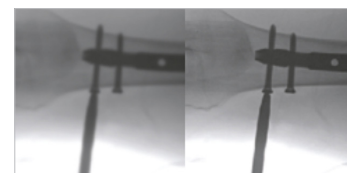
#### Motion Correction

Detects movement and reduces the blur on the image after exposure.



#### Metal Correction

To prevent over radiation or low quality images interrupted by metal.



## Powerful Software, ZENIS

A total solution providing convenient acquisition, storage, management, communication and print with a user friendly interface.

- Convenient diagnostic functions for easy patient / image management
- Accurate diagnostic tools
- Improve the efficiency of your hospital management

- Perfect compatibility with all PACS
- A must have for a digitally equipped hospital
- Convenient communication and management for your customers

#### Image Management

Invert, rotation, zoom In/out, magnifying glass and etc.

#### Measurement & Annotation

Measurement of length and angle  
Mark line, arrow, and characters

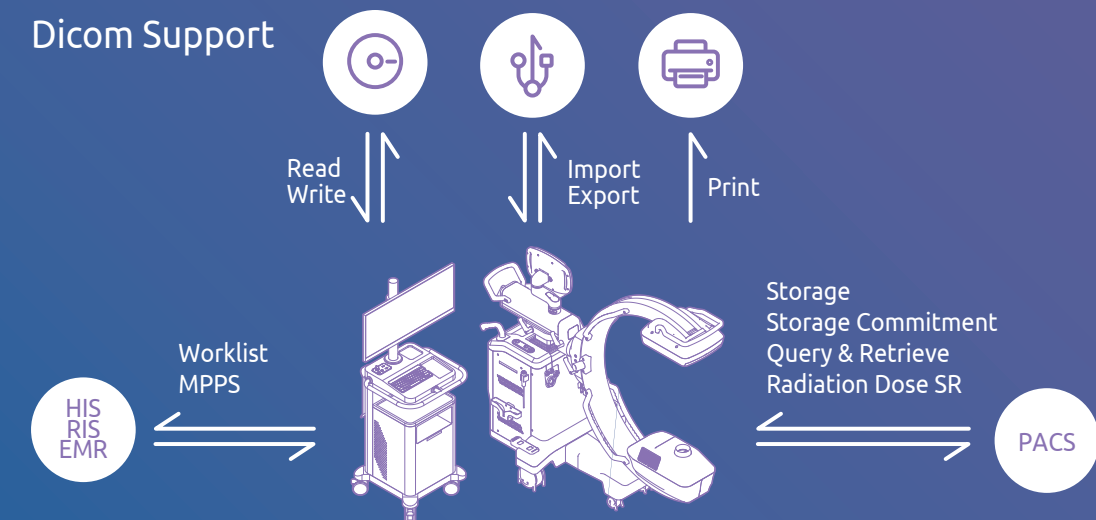
#### DICOM 3.0

Storage service, worklist service

#### Recommended System Requirements for ZENIS

#### Database management In HIPAA Approved Format

### Dicom Support





## Clinical Data

Providing excellent diagnostic images through accumulated experience



Pain Management case



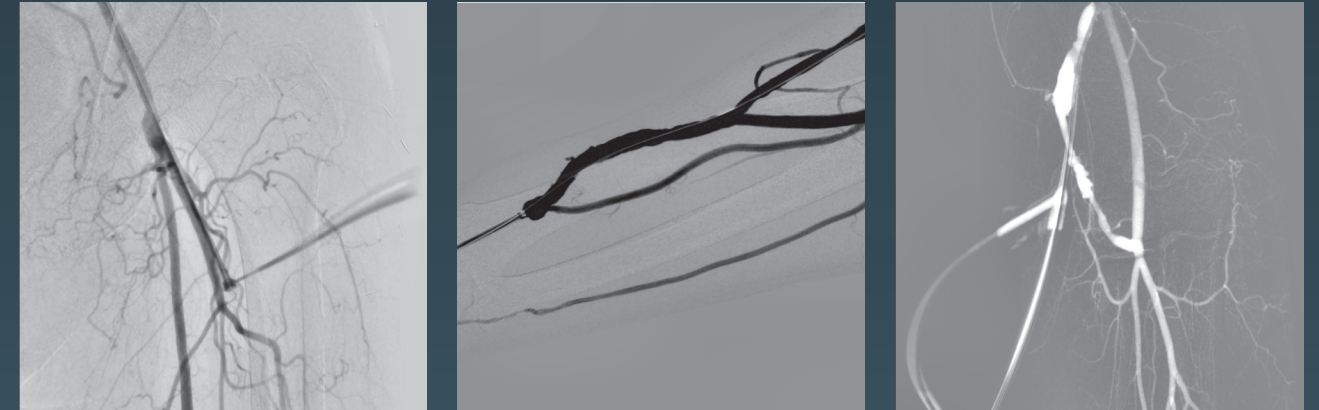
Orthopedics case



Trauma case

## DSA (Digital Subtraction Angiography)

DSA assists with the diagnosis and procedures through the information gathered from the vessels after injecting contrast medium.



DSA Image

Roadmap Image



Live Image with contrast medium injected

## Applications

- General surgery
- Pain management
- Neuro & spine surgery
- Orthopedic surgery
- Trauma procedure
- Urology procedure
- Cardiac surgery
- Peripheral artery diseases
- Vascular surgery

**GENORAY Co.,Ltd.**

**T** +82-31-5178-5500  
**E** [genoray@genoray.com](mailto:genoray@genoray.com)  
**W** [www.genoray.com](http://www.genoray.com)

**GENORAY America Inc.**

**T** +1-855-436-6729  
**E** [inquiry@genorayamerica.com](mailto:inquiry@genorayamerica.com)  
**W** [www.genorayamerica.com](http://www.genorayamerica.com)

**GENORAY EU GmbH**

**T** +49-30-50969498  
**E** [info@genorayeuropa.com](mailto:info@genorayeuropa.com)  
**W** [www.europe.genoray.com](http://www.europe.genoray.com)

**GENORAY Japan**

**T** +81-45-620-4971  
**E** [Info@genorayjapan.co.jp](mailto:Info@genorayjapan.co.jp)  
**W** [www.genorayjapan.co.jp](http://www.genorayjapan.co.jp)

**GENORAY Türkiye**

**T** +90-216-463-57-37  
+90-216-463-57-53  
**E** [genorayturkiye@genoray.com](mailto:genorayturkiye@genoray.com)

**GENORAY Shanghai**

**T** +86-021-6785-8538  
**W** [www.genoray.com.cn](http://www.genoray.com.cn)



\* This X-ray unit may be dangerous to patient and operator unless safe exposure factors and operating instructions are observed.

© GENORAY CO.,LTD. Ver. 2024-06